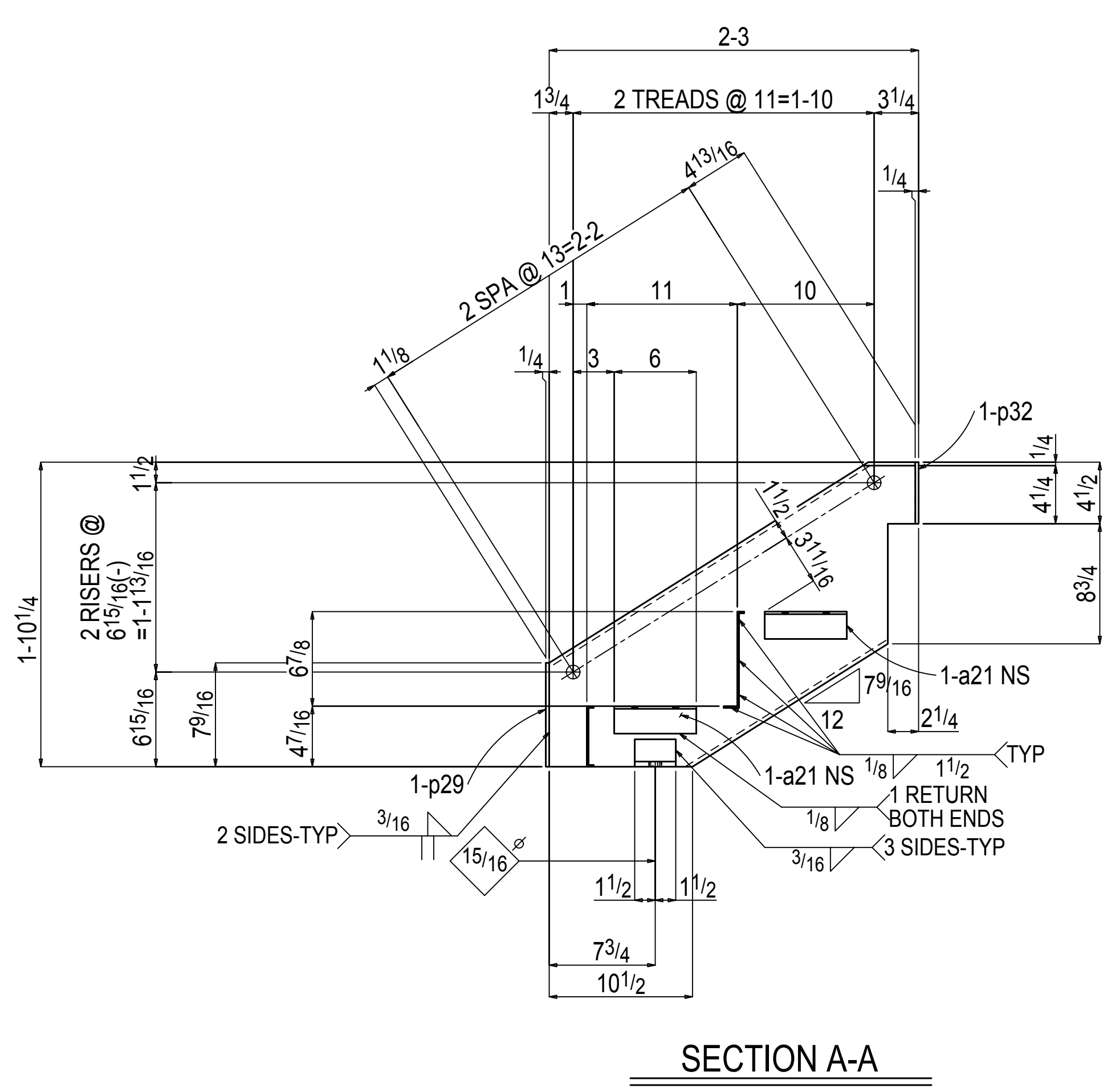
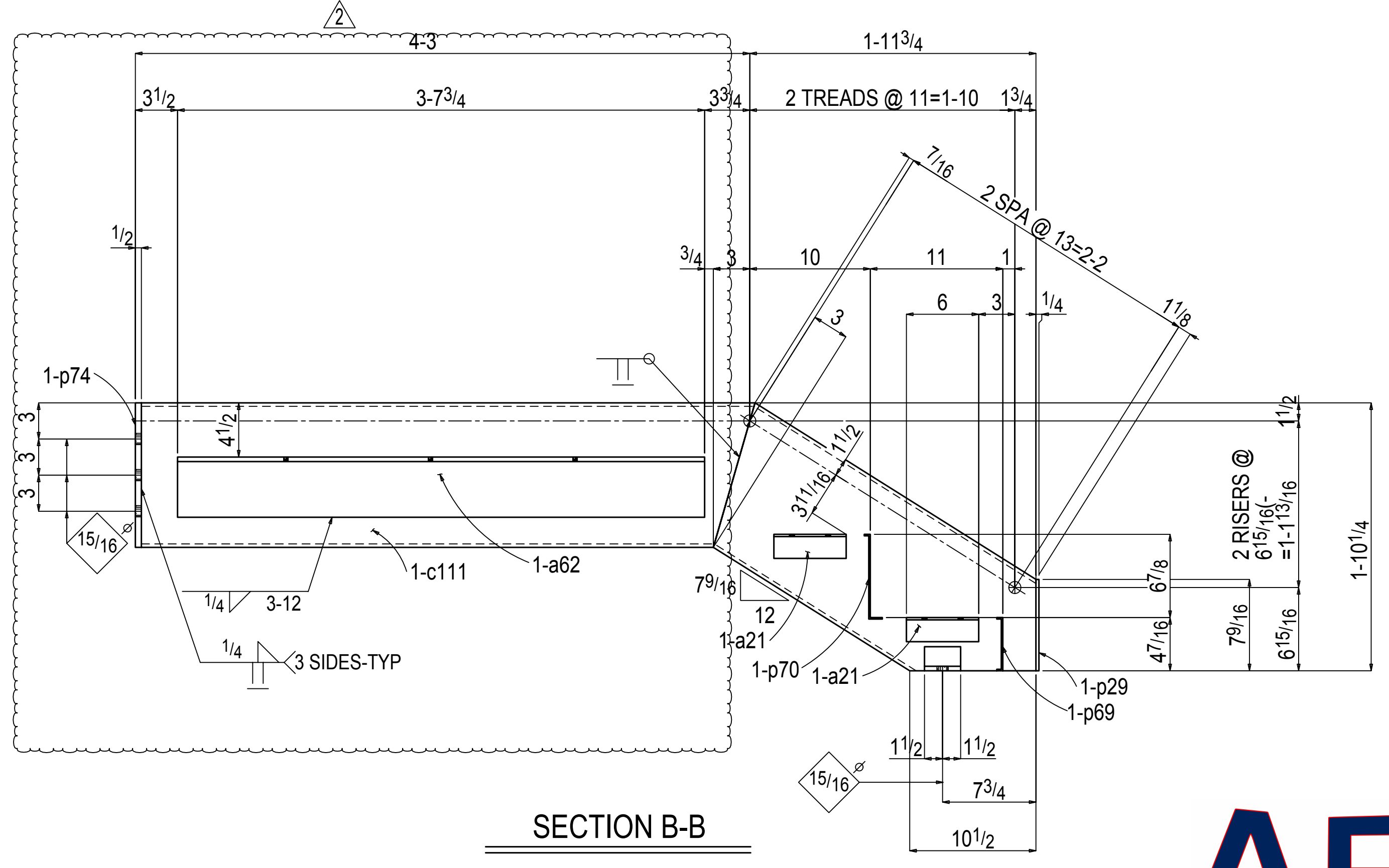


ONE STAIR 2506A



SECTION A-A



SECTION B-B



GRIND SMOOTH
ALL JOINTS AND
SHARP EDGES

BILL OF MATERIAL

Qty	Pc Mk	Description	Ft	In	Remarks	Grade	Wt/Pc
ONE	2506A	STAIR					178
1	c63	MC12x10.6	2-10 ³ / ₈			A36	30
1	c108	MC12x10.6	2-7 ⁹ / ₁₆			A36	28
1	a62	L5x3 ¹ / ₂ x3 ³ / ₈	3-7 ³ / ₄			A36	38
2	a23	L3x2x3 ³ / ₈	3			A36	3
4	a21	L3x2x3 ³ / ₁₆	6			A36	6
1	c111	MC12x10.6	4-2 ¹⁵ / ₁₆			A36	45
1	p74	PL 1/2x3	1-0			A36	5
2	p29	PL 1/4x1 1/2	7 ⁹ / ₁₆			A36	2
1	p32	PL 1/4x1 1/2	4 1/2			A36	0
1	p31	PL 1/4x1 1/2	3 ¹³ / ₁₆			A36	0
1	p70	PL 1/8x42	8 ⁷ / ₁₆		BENT	A36	13
1	p69	PL 1/8x42	5 ³ / ₁₆		BENT	A36	8

FIELD BOLTS							
2		3/4 Dia WEDGE BOLT			4		
3		3/4 Dia WEDGE BOLT			4 1/2		

- GENERAL NOTES:
 1. ACCUMULATIVE DIMENSIONS ARE TAKEN FROM THE LINE
 2. IF NOTED, "NO PAINT AT OPEN HOLES" MEANS WITHIN 1" OF THE HOLE (MIN) BUT NOT LESS THAN THE BOLT DIAMETER AND ALL AREAS WITHIN THE BOLT PATTERN
 3. ALL SHOP INSTALLED HIGH STRENGTH BOLTS ARE TO BE SNUG TIGHT U.N.O.
 4. DEBURRING OF HOLES IS REQUIRED IF BURR EXCEEDS 1/16"
 5. FIELD BOLTS ARE FOR SUPPORTED MEMBERS.

REV	DESCRIPTION	DATE
	REVISED PER FIELD DIMENSIONS	07-14-15
	FOR FABRICATION	05-18-15
	FOR APPROVAL	01-28-15

FINISH/Paint	SSPC-SP3 RED KEM KROMIK	WELD ELECTRODES	E70XX
PROJECT NAME	LANDMARK LOFTS PHASE II	DETAILER	LC
CONTRACTOR	PCL CONSTRUCTION	CHECKER	
DETAILS OF	STAIR #7 ASSEMBLY	PHASE CODE	
		JOB NUMBER	5413
		DRAWING NUMBER	2506

