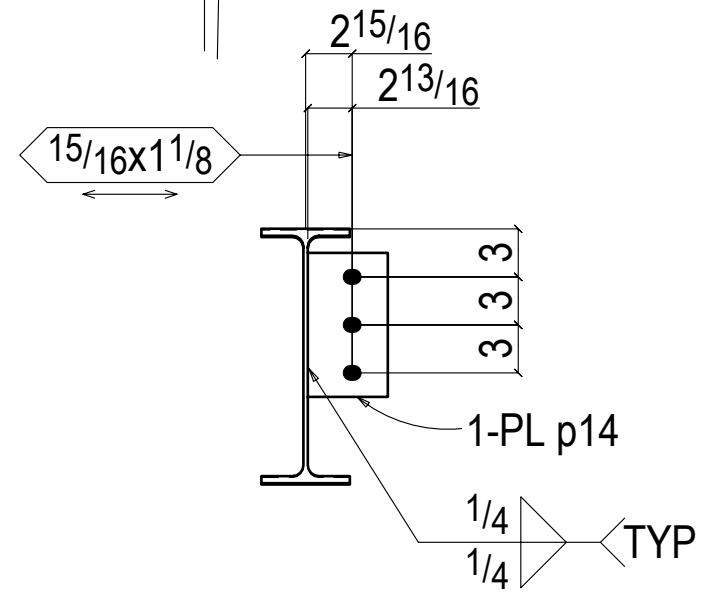


**ONE BEAM 92A**

W | 15 7/8 x 1/4  
 F | 5 1/2 x 7/16



**Section A-A  
 92A**

**BILL OF MATERIAL**

ADV. BILL P/L	DATE	LAYOUT	HEAT NO.	MARK	AMT.	SECTION	LENGTH	REMARKS	INST. OR F.O.B.
				92A	ONE BEAM				
2-22				92A	1	W16x31	37-0 1/2	B2E A992	
				p14	4	PL 3/8x5	9	A36	
						FIELD BOLTS			
					8	7/8 Dia A325		2 +1HD WASH	



PROJECT: QUARTZ HILL PUBLIC LIBRARY	
LOCATION: QUARTZ HILL, CA 93536	
DESCRIPTION: BEAM DETAIL	
ARCHT: SVA & T. ALBER CHEN (THORNTON TOMASETTI, INC)	CONTRACTOR: GRIFFIN SWINERTON
JOB NO. 1524	SHEET NO. 92
	DATE: 07-02-15 BY: PDC