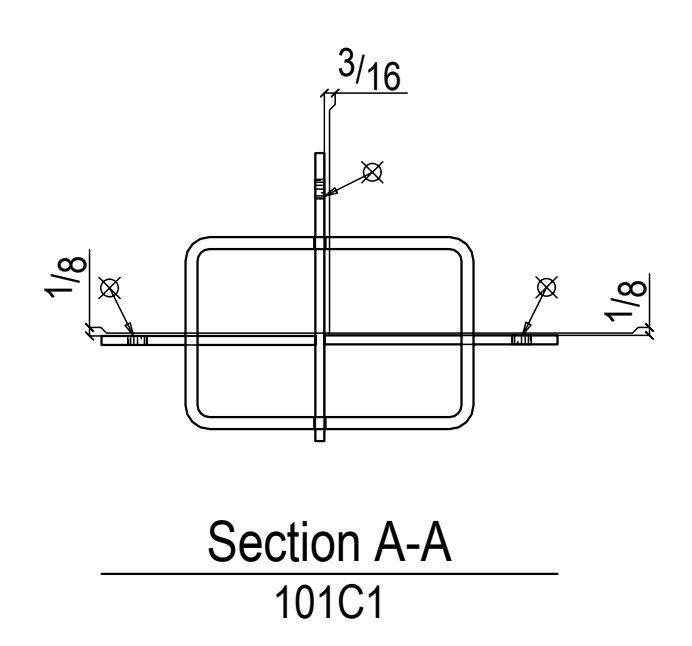
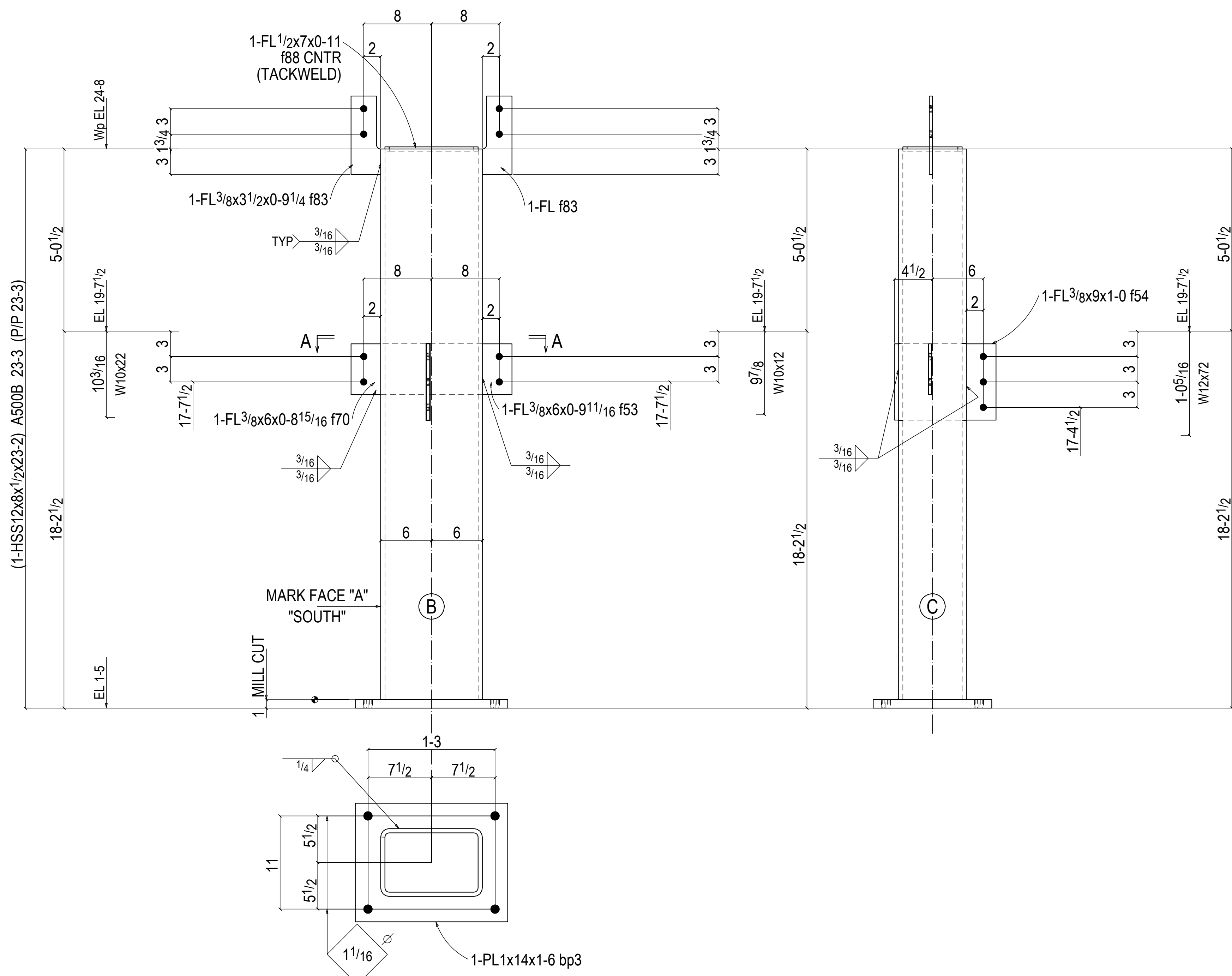


BILL OF MATERIAL

SHIP QTY.	QUAN.	PC. MARK	DESCRIPTION	LENGTH	REMARKS	SEQ.(QTY)
				FT. IN.		
		ONE 101C1	COLUMN			1A
1	1	101C1	HSS12x8x1/2	23-2	M1E A500B	
1	1	bp3	PL1x14	1-6	A36	
1	1	f88	FL1/2x7	11	A36	
1	1	f54	FL3/8x9	1-0	A36	
1	1	f53	FL3/8x6	9 11/16	A36	
1	1	f70	FL3/8x6	8 15/16	A36	
2	2	f83	FL3/8x3 1/2	9 1/4	A36	
			FIELD BOLTS			
	3		3/4 Dia A325N	2	+1HD WASH	
	4		3/4 Dia A325N	1 3/4	+1HD WASH	



ONE COLUMN 101C1
AT GRID:
H & W.19

REF. DWG. E101
SEQ.1A
FOR APPROVAL

ERECTION BOLTS			
QUAN.	SIZE	LENGTH	TYPE

SHOP NOTES: 1.) ALL STEEL TO BE ASTM A36 U.N.
PAINT CENTURY COATING 220-D-344 GRAY PRIMER HOLES 13/16 Dia. UNL. NTD.
SURFACE PREP SSPC SP2 & 3 UNO_MIL THICKNESS _2 TO 3 mils.UNO ELECTRODES E70XX/E7XT-X

