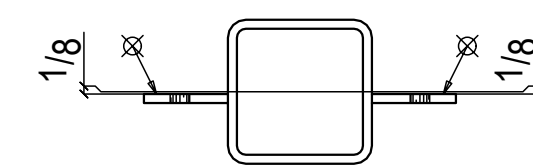
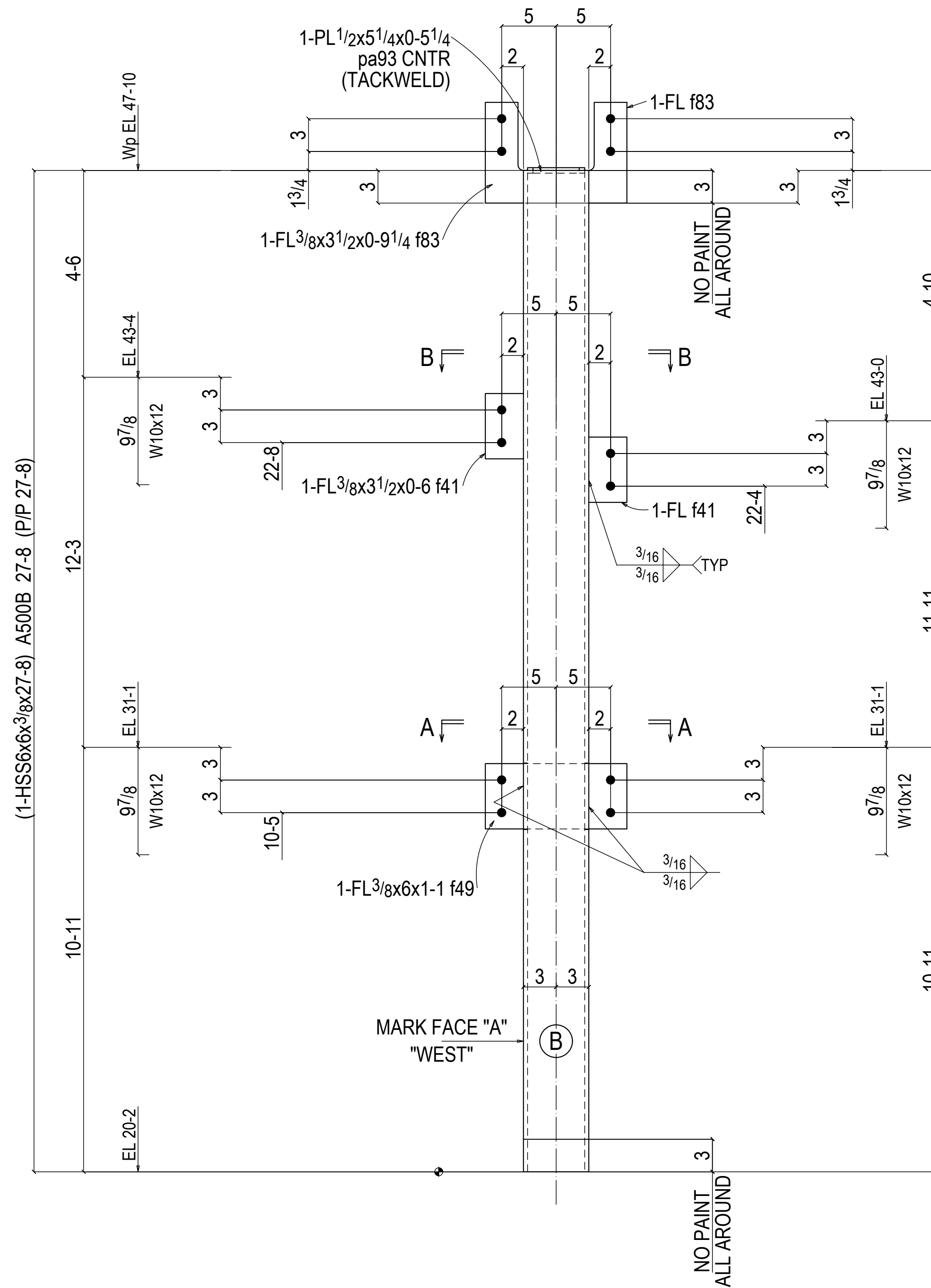
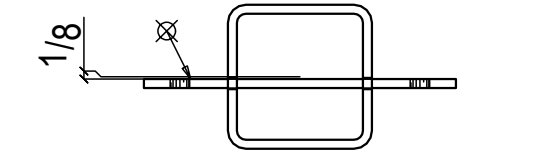


**BILL OF MATERIAL**

SHIP QTY.	QUAN.	PC. MARK	DESCRIPTION	LENGTH FT. IN.	REMARKS	SEQ.(QTY)
		ONE	313C1 COLUMN			3A
1	1	313C1	HSS6x6x3/8	27-8	A500B	
1	1	pa93	PL 1/2x5 1/4	5 1/4	A36	
1	1	f49	FL 3/8x6	1-1	A36	
2	2	f83	FL 3/8x3 1/2	9 1/4	A36	
2	2	f41	FL 3/8x3 1/2	6	A36	
			FIELD BOLTS			
	8		3/4 Dia A325N	13/4	+1HD WASH	



Section B-B  
313C1



Section A-A  
313C1

**ONE COLUMN 313C1**

AT GRID:  
W.R & W.2.3

SEQ.3A  
FOR APPROVAL

ERECTION BOLTS			
QUAN.	SIZE	LENGTH	TYPE

SHOP NOTES: 1.) ALL STEEL TO BE ASTM A36 U.N.

PAINT CENTURY COATING 220-D-344 GRAY PRIMER HOLES 13/16 Dia. UNL. NTD.  
SURFACE PREP SSPC SP2 & 3 UNO MIL THICKNESS 2 TO 3 MILS UNO ELECTRODES E70XX/E7XT-X

